

MSD's sister company, Racepak, has created a full line of gauges and a complete dashboard that is compatible with our MEFI and Blaster EFI systems. One of the coolest features is that the dash and gauges all communicate to the EFI system via Racepak's V-Net technology.

V-Net allows users to easily connect any number of gauges and dashboards without having to cut or crimp a single wire! How is this done? The V-Net communicates over an automotive communication bus called CAN. CAN uses two wires to create an internet-like network in which multiple devices can talk to each other seamlessly. Gone are the days of having to wire up each gauge with an extra sensor, wiring and lighting. These products are installed in a fraction of the time, with no extra wiring.

MSD[®]

FUEL INJECTION

COMING
SPRING
2007

ULTRA DASH

This is truly the ultimate street or race dash assembly. It is provided with everything required to display engine RPM, water temperature, oil temperature, oil pressure, and battery voltage with all the amenities for street.

By using the electronic speed sensor sending unit on your transmission it will also provide speedometer, odometer, and trip odometer functionality. Fuel level is measured with the stock tank sending unit. The Street Dash has indicator lights for turn signals, parking brake, high beam, low oil pressure, high oil temperature, high water temperature, and low battery voltage. It is also equipped with outputs for a shift light and an electronic fan controller relay.



Additional functions, such as pressures and temperatures, can be displayed on the street dash by adding Racepak's optional pre-programmed V-Net modules and sensors. The display on the street dash is programmed at the factory. The screen display is customizable with optional programming software available from Racepak. Speedometer and odometer calibration does not require the programming software.

MSD ULTRA DASH PN11300



INTELLI-GAUGES 2.25"

Oil Pressure	PN11306
Tachometer	PN11307
Water Temp	PN11308
Air Fuel	PN11309
Battery Voltage	PN11310
Oil Temp	PN11311
Fuel Level	PN11312
Trans Temp	PN11313
Fuel Pressure	PN11314



Keep tabs on your engine's vitals with Racepak's Intelli-Gauges. These unique gauges are easy to install with the MEFI systems thanks to their V-Net CAN bus technology. Check out more information at www.msddignition.com or www.racepak.com.



MSD ELECTRONIC FUEL INJECTION

MSD is known as the leader in performance and racing ignition technology. For decades MSD has been a part of winning NASCAR and NHRA teams. MSD has now taken the first of many steps to bring Electronic Fuel Injection into the MSD family. MSD has partnered with some of the best known names in electronics starting with Delphi's line of MEFI controllers, MSD's Big Stuff 3 powered Blaster EFI product, and MSD's own Racepak branded line of Digital Dashboards and Gauges.

1490 HENRY BRENNAN DR.
EL PASO, TEXAS 79936
915-857-5200

FRM 28260
PRINTED IN THE USA
©2007 Autotronic Controls Corporation

www.msddignition.com



DELPHI MEFI4

- Race proven technology
- Easy to install on a variety of GM engines
- Wide Band O2 technology
- Friendly InGenius software for tuning

MSD has teamed up with Delphi to make a tunable MEFI4 available to anyone. The Delphi MEFI4 is a bullet proof raceproven EFI system that has endured some of the harshest racing conditions in the world, including the Dakar Rally, the Baja 1000, off-shore boat racing, Speed World-Challenge road racing and the salty Bonneville flats. Don't be fooled though, the MEFI4 is not just for racing. Many hot rodders love the MEFI4's small size (4 x 4 inches square!) and its ability to be mounted just about anywhere...including on the engine!

Included in the package is MSD's InGenius tuning software that gives any user full control of the MEFI4's calibrations. Like other systems, the MEFI4 can be tuned LIVE, so calibration changes can be immediately felt while running the engine. The InGenius software takes tuning to a new level of simplicity that includes drop down menus and pictures to identify coils, crankshaft pickup wheels, distributors, etc. Gone are the days of complicated user interfaces that only the software developers know how to operate.

For the techie crowd, the MEFI4 is built on a ceramic substrate circuit board for incredible durability. It uses a bank to bank speed density algorithm for fueling and is able to close loop on the optional single or dual wide-band oxygen sensors. It has 8 spark drivers, 2 fan drivers, 1 aux output, as well as shift-without-lift capability. The MEFI4 also includes Delphi's automotive based diagnostics that can detect problems with any sensor, enable a default mode, and report the specific diagnostic code to the user.

Unlike other systems, the MEFI4 has been engineered for specific applications. Have a RamJet, LS, or Ecotec engine, no problem! The MEFI4 system comes with over twenty race proven and dyno-tuned calibrations for the LS1, LS2, LS6, LS7, Ecotec 2.2L and 2.0L, Ramjet 350 and Ramjet 502 applications just to name a few. Also included with the kit is an engine-specific fitted wiring harness. No need to get your wire spool and wire cutters out for this system. The MEFI4 can go from box to throttle within an hour. Users can upgrade their software to run different types of engines as they are engineered. Make sure to check www.msdisignition.com for engine packages and software upgrades as they become available.



- OPTIONAL EQUIPMENT:**
- Wide Band Close Loop Oxygen sensor kit (single or dual supported)
 - Racepak G2X or G2X Pro GPS based data loggers
 - Racepak Digital Dashboard
 - Racepak Smart Gauges

- THE TECHIE STUFF:**
- Closed loop idle/air speed control functionality
 - Uses GM MAP, TPS, coolant sensors
 - Speed-density algorithms allow for easy tuning
 - Drives eight high impedance injectors
 - Advanced transient fueling algorithms
 - Seamless decel fuel cut-off
 - Compatible with 1 and 2 BAR MAP sensors

MEFI4 EFI SYSTEM, PN 240001*
Supplied with ECU and main harness

- IGNITION HARNESS:**
- | | |
|--------------------------|-----------------|
| Gen 3 LS (LS1, LS6, LQ9) | Ecotec 2.2L L61 |
| Gen 4 24x LS (LS2) | Ecotec 2.0L LSJ |
| Gen 4 58x LS (LS2, LS7) | Formula SAE |
| Ramjet 350/502 | |

More engines coming soon!
Go to www.msdisignition.com for your application.



BLASTER EFI

- High-end EFI performance and options in an affordable and easy to install system
- Improve your car's overall performance and driveability
- Closed loop wide-band O2 sensor ensures accurate air/fuel ratio feedback
- Supplied with the ECM, Wide-Band O2 sensor and main wiring harness
- Compatible with GM sensors and knock sensor
- Capable of handling up to 1,000 horsepower engines for street or strip



Most performance enthusiasts think of high voltage coils when they hear the name Blaster, but for 2007, you'll be introduced to the all new Blaster EFITM system! MSD's Blaster EFI system is an affordable electronic fuel injection system that delivers wide-band oxygen sensor feedback and onboard data acquisition (without a laptop connected). This means you get a closed loop EFI system that is constantly monitoring the exhaust gases and making adjustments to achieve the best performance possible. From idle to wide open throttle, the Blaster EFI system will deliver great driveability and performance!

The Blaster EFI system was developed in conjunction with the EFI wizards at Big Stuff 3. The system is a bank-fire set-up so there is no cam synchronization signal needed, which simplifies installation. From there, you can tweak and tune with the easy to use software to fit your driving style and need.

One helpful tool for tuning is the on-board data acquisition feature of the Blaster. This will allow you to review selected engine management variables to be recorded in real time as fast as 50 times per second, with 10-bit resolution, for up to 5.5 minutes. Once recorded, the data can be analyzed off-line with the supplied MSD software.

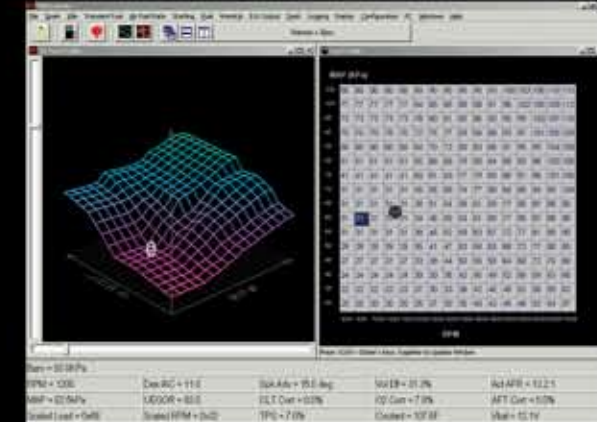
The main harness is clearly labeled and easy to connect to common GM type sensors. The only items you'll need to purchase separately are an injector harness (V8, V6 or 4-cylinder) and a distributor harness to match your ignition. Get your muscle car or street rod to perform its best with modern technology from MSD's Blaster EFI System.

- THE TECHIE STUFF:**
- Closed loop idle/air speed control functionality
 - Uses GM MAP, TPS, coolant sensors
 - True speed-density algorithms allow for easy tuning
 - Drives eight high impedance injectors
 - Advanced transient fueling algorithms
 - Seamless decel fuel cut-off
 - Configurable load and RPM axis to enable optimization in desired range
 - 50Hz, 10-bit data acquisition of selected engine variables
 - Compatible with 1, 2, 3 and 4 BAR MAP sensors

BLASTER EFI SYSTEM, PN 2450*
Supplied with ECU and main harness

- REQUIRED HARNESSES:**
- | | |
|------------------------|----------|
| Fuel Injection Harness | |
| 8-Cylinder | PN 24501 |
| 6-Cylinder | PN 24502 |
| 4-Cylinder | PN 24503 |

- IGNITION HARNESS:**
- The Blaster is supplied with a distributor connector for an MSD Distributor. For other applications:
- | | |
|-----------------|----------|
| Ford TFI | PN 24505 |
| GM HEI | PN 24507 |
| GM LT1, '92-'95 | PN 24508 |
| GM LT1, '96-'97 | PN 24509 |



For more information go to www.msdisignition.com

*Not legal for sale or use on pollution controlled vehicles.